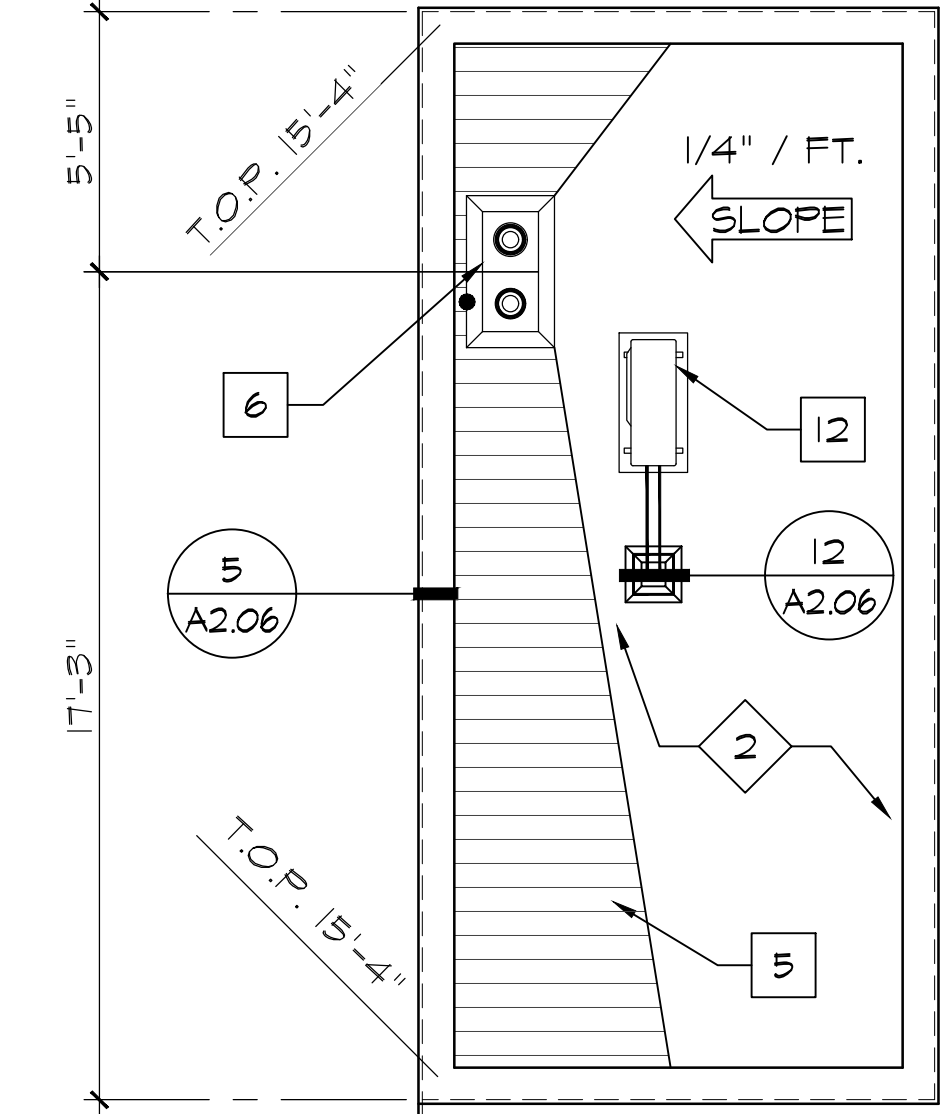
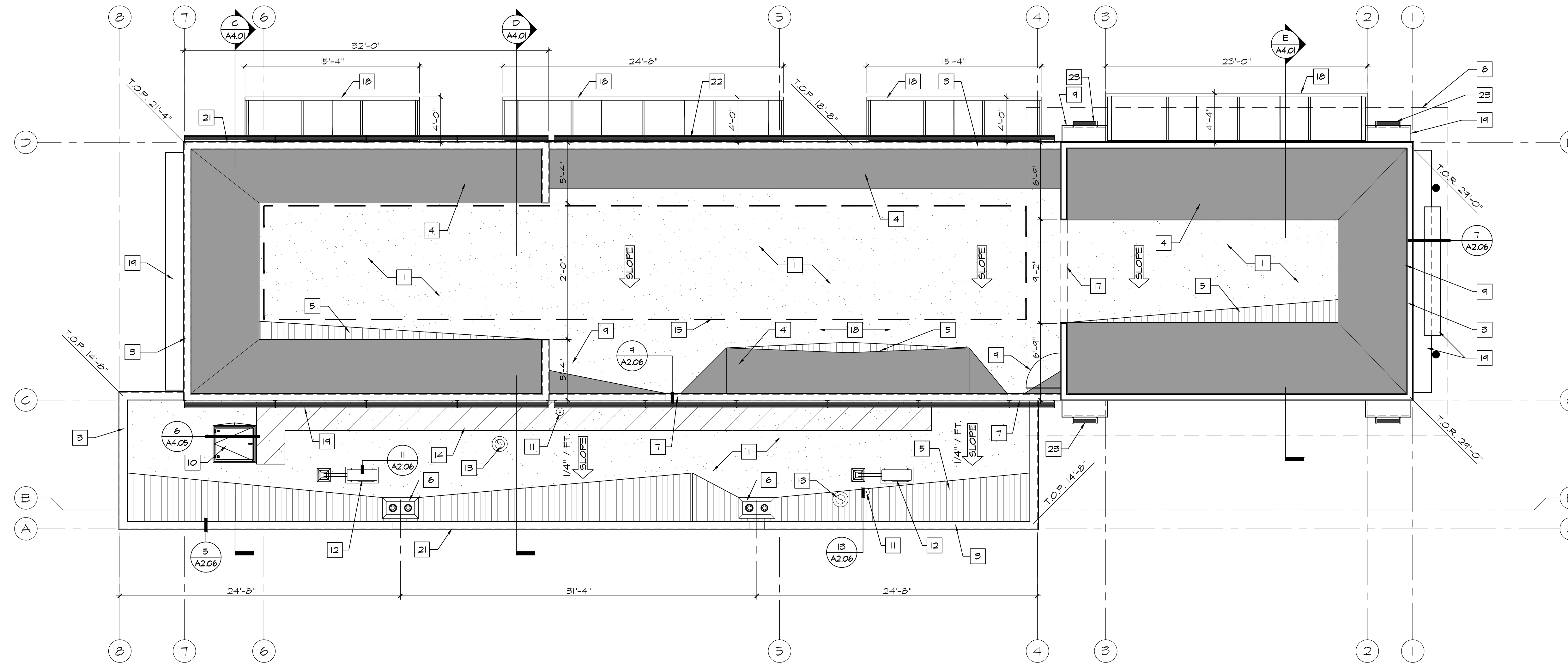
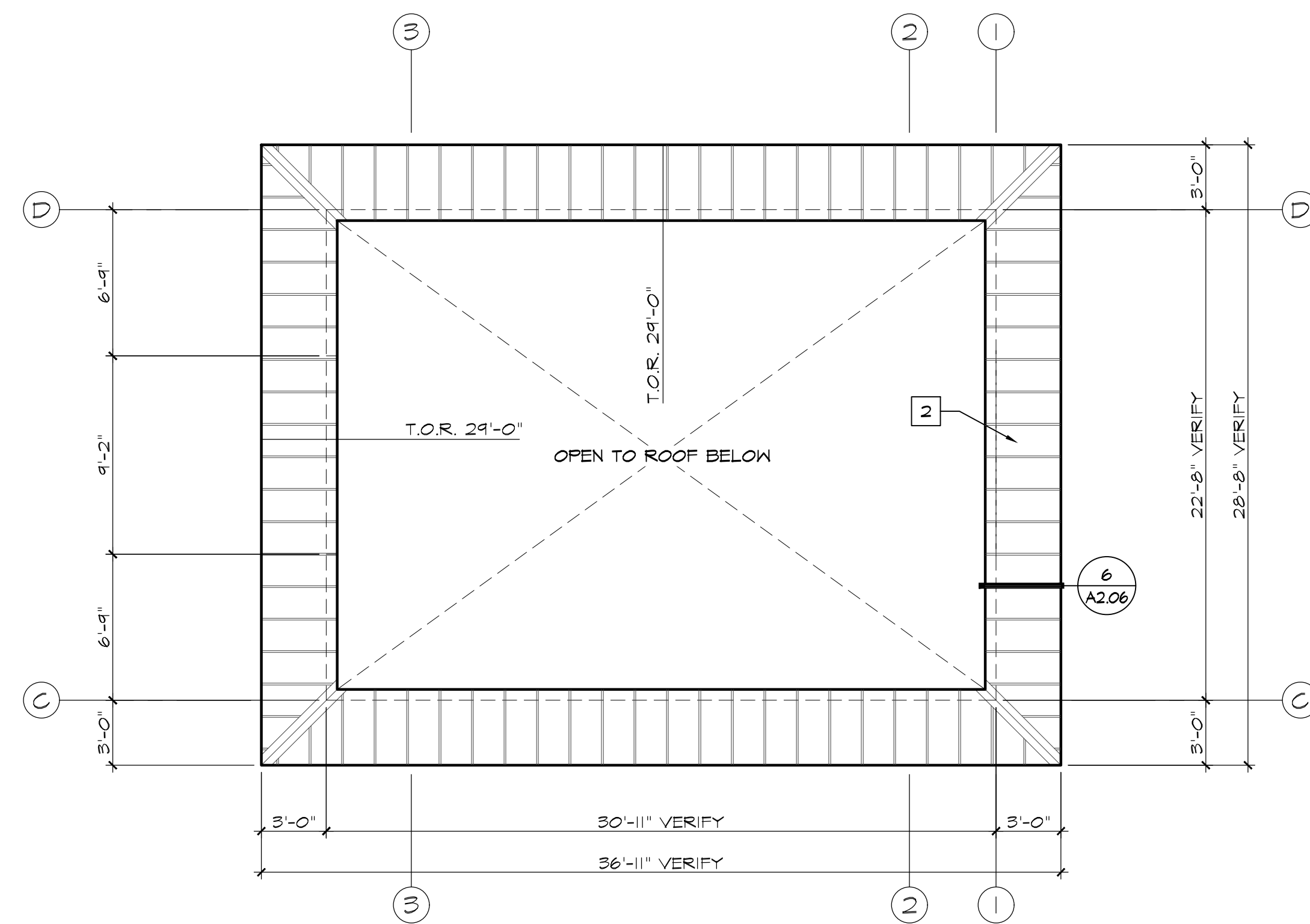


# PC EXHIBIT D



1 ROOF PLAN  
SCALE: 3/16" = 1'-0"

2 QB STATION ROOF PLAN  
SCALE: 1/4" = 1'-0"



3 UPPER ROOF AT ENTRY TOWER  
SCALE: 3/16" = 1'-0"

### KEYNOTES

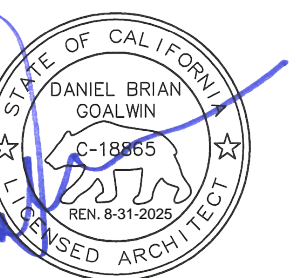
- 1 TPO MEMBRANE ROOFING. SEE DETAIL.
- 2 STANDING SEAM METAL ROOFING.
- 3 PRE-FINISHED METAL COPING AT TOP OF PARAPET WALL.
- 4 ROOF CRICKET, 1/4" ROOF SHEATHING OVER METAL STUD DIAGONAL BRACING SLOPE AT ONE TO ONE.
- 5 TAPERED RIGID INSULATION CRICKET WITH 1/4" ISOLATION BOARD (TYP).
- 6 ROOF DRAIN AND OVERFLOW IN RECESS. SEE PLUMBING DRAWINGS. (TYPICAL 3 PLACES)
- 7 THROUGH WALL OVERFLOW SCUPPER. SPILL TO ROOF BELOW.
- 8 OUTLINE OF UPPER ROOF AT ENTRY TOWER. SEE UPPER ROOF PLAN.
- 9 3'-0" SQUARE ACCESS PANEL. (TYPICAL 2 PLACES) SEE DETAIL 10/A2.06.
- 10 ROOF ACCESS HATCH.
- 11 EXHAUST FAN UNIT. (TYPICAL 2 PLACES)
- 12 MECHANICAL UNIT TO BE CONCEALED FROM VIEW BY PARAPET.
- 13 PLUMBING VENT. (TYPICAL 2 PLACES)
- 14 ROOF WALK PATH OVERLAY.
- 15 ROOF AREA DEDICATED TO POSSIBLE FUTURE SOLAR PANEL INSTALLATION.
- 16 ROOF AREA DEDICATED TO MAINTENANCE ACCESS TO POSSIBLE FUTURE SOLAR INSTALLATION.
- 17 OPENING IN WALL BETWEEN CRICKETS.
- 18 WALL MOUNTED METAL CANOPY BELOW (TYP).
- 19 CEMENT PLASTER FINISH AT TOP OF FURRED WALL FEATURE (TYP).
- 20 FREE STANDING METAL PAY STATION CANOPY BELOW.
- 21 WALL BELOW SHOWN DASHED.
- 22 LINEAR DOWN LIGHTING - SEE ELECTRICAL PLANS
- 23 PILASTER DOWN LIGHTING - SEE ELECTRICAL PLANS

Revision  
No. Date By Ckd. Appr.

**ROOF PLAN**  
**QUICK QUACK CAR WASH NO. 26-651**  
**300 NORTH SUNRISE AVE**  
**ROSEVILLE, CALIFORNIA**

**QUICK QUACK CAR WASH**  
**6020 WEST OAKS BLVD., SUIT 300**  
**ROCKLIN, CA 95765**

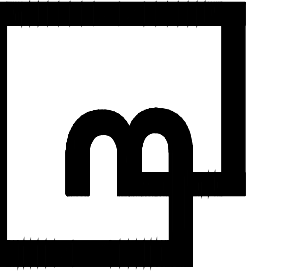
For:



Scale:  
Horizontal As Noted  
Vertical N/A

Designed: JLR  
Drawn: JLR  
Checked: JLR  
Approved: KCH  
Date: XX/XX/XX

**Barghausen Consulting Engineers, Inc.**  
18215 72nd Avenue South  
Kent, WA 98032  
425.251.6222 [barghausen.com](http://barghausen.com)



Job Number  
**23359**  
Sheet  
**A2.05**